

NORTHWEST DISTRIBUTION CENTER

16111 Park Entry Drive, Suite 200 & 400
Houston, Texas 77041



**9,840 SF to
21,840 SF
FOR LEASE**



CONTACT

John Kruse
713.602.3756
jkruse@hlhouston.com

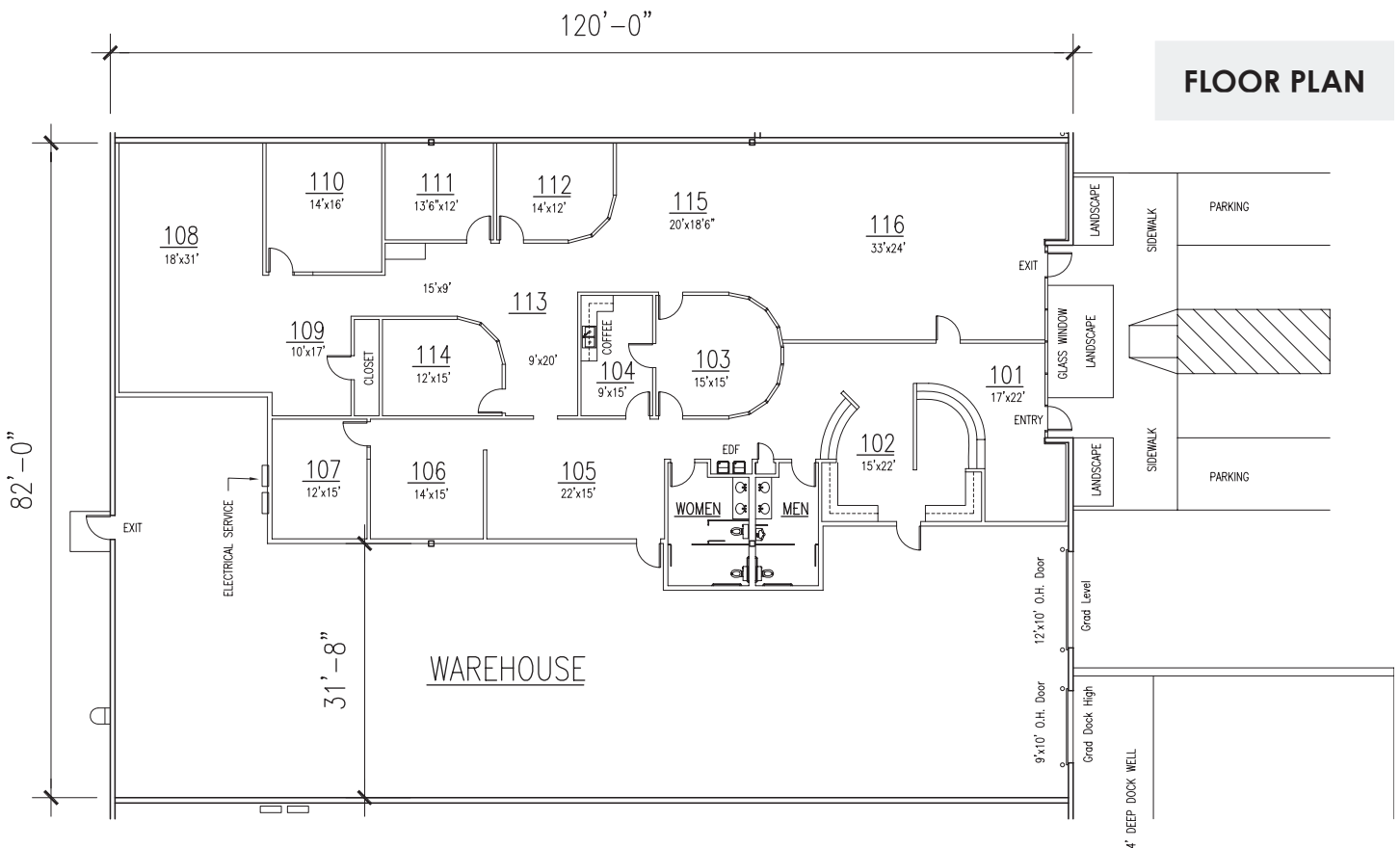


**9,840 SF
FOR LEASE**

NORTHWEST DISTRIBUTION CENTER

Suite 200

- 9,840 SF Total Available
- 5,680 SF Office
- 4,160 SF Warehouse
- One (1) Drive-In 12'x10' Grade Level Door
- One (1) 9'x10' Dock High Loading Well
- 24' Clear Height
- Available December 1, 2017



CONTACT

John Kruse
713.602.3756
jkruse@hlhouston.com



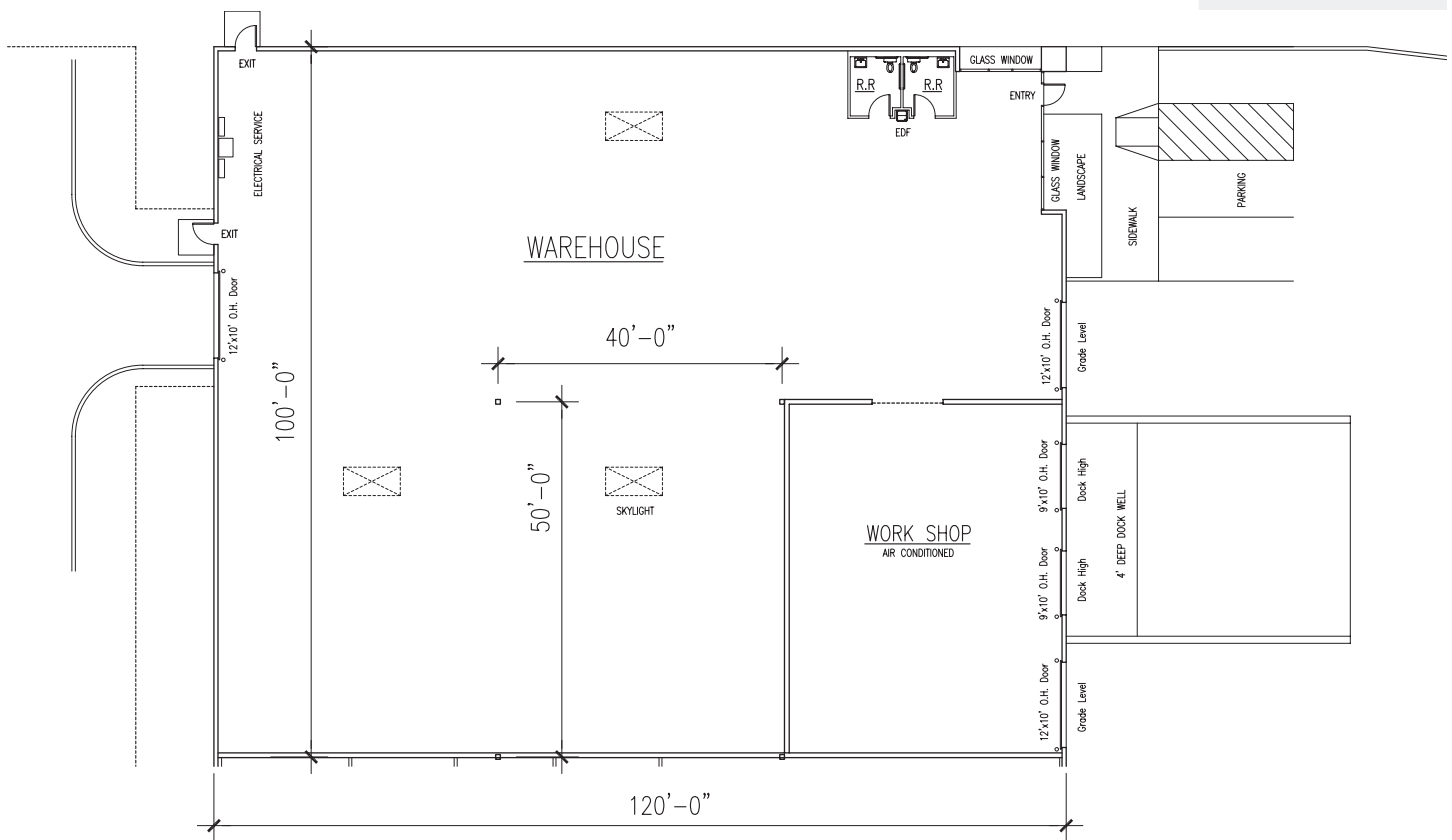
12,000 SF FOR LEASE

NORTHWEST DISTRIBUTION CENTER

Suite 400

- 12,000 SF Total Available
- 2,000 SF A/C Shop Area
- 10,000 SF Warehouse
- Two (2) Drive-In 12'x10' Grade Level Doors
- Two (2) 9'x10' Dock High Loading Wells
- 24' Clear Height
- Available October 1, 2017

FLOOR PLAN



CONTACT

John Kruse
713.602.3756
jkruse@hlhouston.com

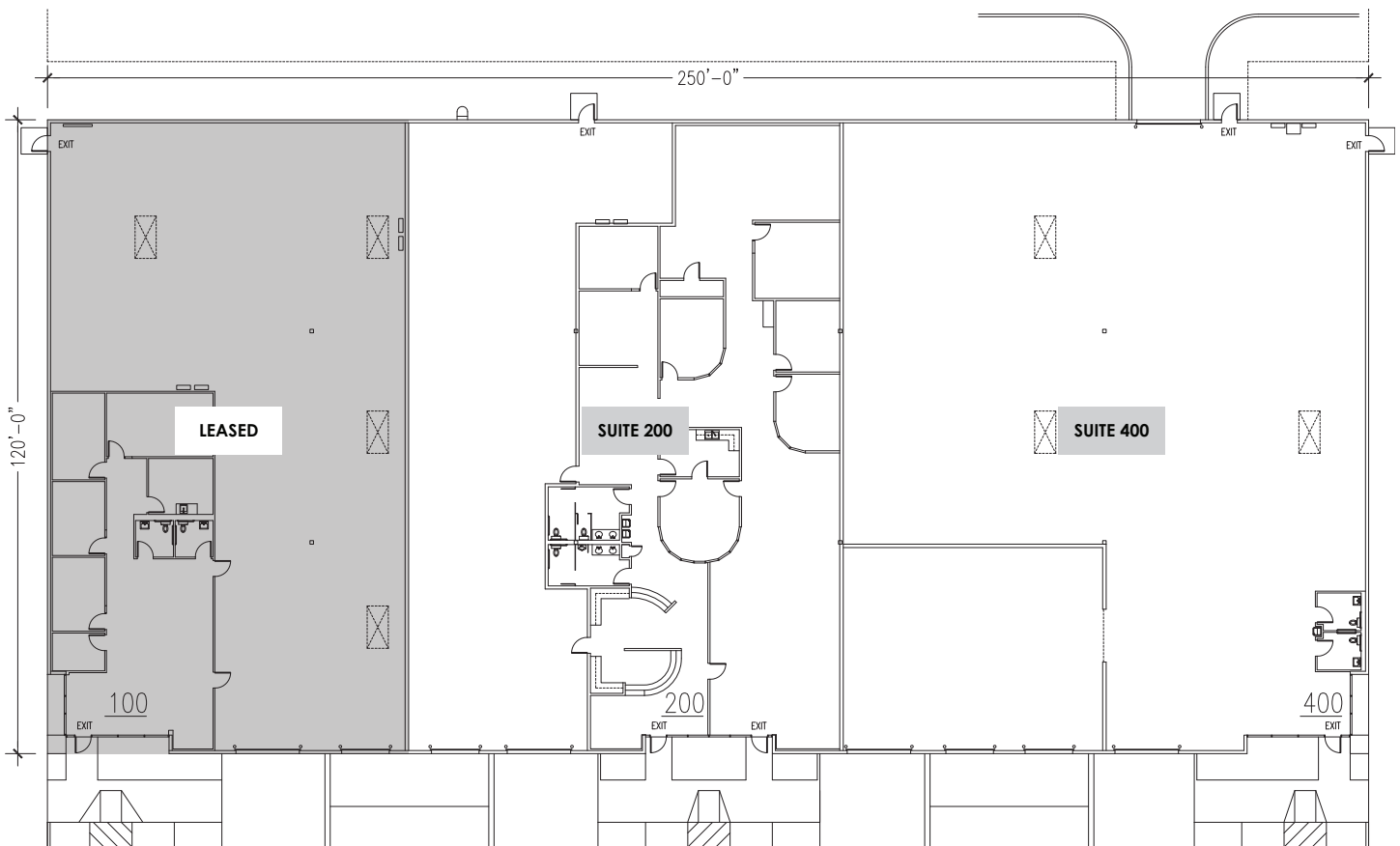
**21,840 SF
FOR LEASE**

NORTHWEST DISTRIBUTION CENTER

Suite 200 and 400

- 21,840 SF Total Available
- 5,860 SF Office
- 2,000 SF A/C Shop Area
- Three (3) Drive-In 12'x10' Grade Level Doors
- Three (3) 9'x10' Dock High Loading Wells
- 24' Clear Height
- Available December 1, 2017

FLOOR PLAN



CONTACT

John Kruse
713.602.3756
jkruse@hlhouston.com

